

☐ ***Walt Disney's Comics and Stories – Vol. 13 No. 2*** ***(November 1952)***

Evaluation Date: April 10, 2026

Publisher: Dell Comics

Cover Price: 10¢

Format: Staple-bound comic magazine

Contents: Donald Duck lead story with additional Disney character stories

Cover Description: Donald Duck holds a large rug or mat while Huey, Dewey, and Louie are wrapped together inside it, set against a vivid red interior background.

Summary of Observations

This comic presents as a visually appealing example with strong front-cover color and gloss, solid interior presentation, and generally stable structure, with condition issues concentrated primarily at binding points. The front cover retains vivid color saturation and noticeable gloss across most of the surface, though localized waviness is visible along the upper portion of the cover. Edge damage is also present and is documented in close-up imagery. Despite these issues, the overall cover presentation remains strong.

Structurally, the spine remains continuous and well aligned, showing only localized weakness at one staple position. One staple exhibits severe oxidation with associated paper damage, while the other staple remains in comparatively better condition. The inside front cover is present and confirms publication information. Interior pages show strong artwork color and consistent page toning, though images used for the brittleness test reveal pre-existing edge damage prior to flexing. The centerfold remains attached. Brittleness testing indicates retained flexibility. Overall, the comic combines strong visual appeal with localized binding defects that warrant close attention.

FRONT COVER — OBSERVATIONS

Walt Disney's Comics and Stories – Vol. 13 No. 2 (November 1952)

Photo Condition & Quality (img_2615, img_2623):

The primary front-cover image is sharp, evenly lit, and fully framed. A secondary image focuses specifically on edge damage, providing clear magnification of localized defects. Resolution is sufficient to assess gloss variation, waviness, and edge wear.

Observations

The front cover displays **strong color saturation**, with the red background appearing rich and uniform and the character artwork sharply defined with stable inks. Surface gloss is present across much of the cover, especially in the lower half. Along the **upper portion of the front cover**, visible **waviness** is present, appearing as shallow undulations running horizontally across the top section. This waviness extends approximately **50–65 mm** across the width of the cover and descends roughly **15–25 mm** from the top edge.

In the same upper area, there is a **noticeable reduction in surface gloss**, with the affected region appearing more matte compared to the glossier lower portion of the cover. No cracking or color break is visible within this area.

Edge damage is visible along the lower edge and fore edge, documented in the close-up image. This damage consists of shallow, irregular chipping and abrasion, with exposed paper visible beneath the ink layer. The most pronounced area measures approximately **6–10 mm** in length along the edge and extends inward up to **3–4 mm**. Corners show mild rounding without complete paper loss. No writing, stains, or tears are observed.

- Strong color saturation across red background
- Retained but uneven surface gloss
- Waviness along upper cover (~50–65 mm wide, ~15–25 mm tall)
- Localized gloss loss in wave-affected area
- Edge chipping and abrasion (~6–10 mm along edge)
- Mild corner rounding
- No writing or moisture staining observed

Overall Impression

The front cover remains visually attractive but is clearly affected by localized waviness, gloss loss at the top, and documented edge damage.

BACK COVER — OBSERVATIONS

Walt Disney's Comics and Stories – Vol. 13 No. 2 (November 1952)

Photo Condition & Quality (img_2616):

The image is clear and evenly lit, showing the full back cover with all edges and corners visible.

Observations

The back cover exhibits **moderate, uniform age-related toning** typical of early-1950s Dell paper stock. Advertising artwork remains legible with intact borders and panels. Surface gloss is reduced but even. Edge wear is minimal, and corners show mild rounding estimated at **3–4 mm** inward. No tears, tape, writing, or moisture staining are observed.

- Moderate uniform toning
- Smooth surface with reduced gloss
- Minimal edge wear
- Mild corner rounding (~3–4 mm)
- Advertisement intact and legible

Overall Impression

The back cover is notably clean and well preserved for its age, with light, even toning and minimal wear.

INSIDE FRONT COVER — OBSERVATIONS

Walt Disney's Comics and Stories – Vol. 13 No. 2 (November 1952)

Photo Condition & Quality (img_2617):

The image is sharp and evenly lit, clearly showing the inside front cover, margins, and indicia area.

Observations

The inside front cover shows cream to light tan paper coloration with light age-related toning. Surface remains flat with no tearing or stains observed. Subscription and publication text remains clear and legible.

- Inside front cover present
- Light, even toning
- Clean margins
- No writing or tearing observed
- Indicia visible and legible: Walt Disney's Comics and Stories Vol. 13, No. 2 November 1952
Dell Publishing

Overall Impression

The inside front cover is complete, flat, and clearly confirms publication details.

SPINE — OBSERVATIONS

Walt Disney's Comics and Stories – Vol. 13 No. 2 (November 1952)

Photo Condition & Quality (img_2624):

The spine image is well lit and clearly shows the full spine length and both staple locations.

Observations

The spine remains continuous and aligned, with no major splitting observed. Surface wear along the fold is minimal overall. Structural weakness is localized at one staple position rather than distributed along the spine length.

- Continuous spine
- No full spine split observed
- Localized weakness near one staple
- Overall alignment remains true

Overall Impression

The spine is generally strong, with condition issues concentrated at a single staple location.

UPPER STAPLE — OBSERVATIONS

Walt Disney's Comics and Stories – Vol. 13 No. 2 (November 1952)

Photo Condition & Quality (img_2625):

The macro image is sharp and evenly lit, centered on the upper staple area.

Observations

The upper staple is present with oxidation visible on the metal. Surrounding paper shows darkened discoloration extending approximately **3–5 mm** outward. Paper fibers near the staple appear weakened but intact.

- Staple metal present
- Visible oxidation
- Surrounding paper discoloration (~3–5 mm)
- No complete pull-through

Overall Impression

The upper staple shows moderate oxidation with limited but visible paper impact.

LOWER STAPLE — OBSERVATIONS

Walt Disney's Comics and Stories – Vol. 13 No. 2 (November 1952)

Photo Condition & Quality (img_2626):

The macro image is clear and properly framed around the lower staple area.

Observations

The lower staple exhibits **severe rust**, with extensive corrosion obscuring portions of the metal. Surrounding paper shows significant dark discoloration and visible erosion, with the affected area extending approximately **10–14 mm** outward. The paper edge near the staple appears fragile and thinned.

- Staple metal present but heavily corroded
- Severe rust visible
- Surrounding paper damage (~10–14 mm)
- Paper integrity compromised at staple

Overall Impression

The lower staple represents a major structural defect, with severe oxidation and substantial paper damage.

CENTERFOLD — OBSERVATIONS

Walt Disney's Comics and Stories – Vol. 13 No. 2 (November 1952)

Photo Condition & Quality (img_2622):

The image is evenly lit and shows both centerfold pages clearly.

Observations

The centerfold remains present and aligned. Staples are visible through the fold. Despite staple oxidation, no complete splitting or detachment is observed along the fold.

- Centerfold present
- Attached at both staples
- Uniform toning
- No full split observed

Overall Impression

The centerfold remains attached, though long-term stability is affected by staple condition.

INTERIOR PAGES — OBSERVATIONS

Walt Disney's Comics and Stories – Vol. 13 No. 2 (November 1952)

Photo Condition & Quality (img_2618–img_2621):

Interior images are sharp, evenly lit, and show full pages with margins visible.

Observations

Interior pages display cream to light tan paper coloration with **strong artwork color** and clean print throughout. Pages appear complete and readable. Minor edge wear and small corner bends are present, estimated at **2–3 mm** inward.

- Cream to light tan interior pages
- Strong interior color saturation
- Pages complete and readable
- Minor edge wear
- Small corner bends (~2–3 mm)

Overall Impression

Interior pages are visually strong and well preserved with minimal handling wear.

BRITTLENESS TEST — OBSERVATIONS

Walt Disney's Comics and Stories – Vol. 13 No. 2 (November 1952)

Photo Condition & Quality (img_2627):

The image clearly shows a page being flexed, with existing edge damage visible prior to bending.

Observations

The page bends with limited smoothness due to **pre-existing edge damage**. Areas of chipped and fragile paper are visible before flexing. No new cracking or fiber fracture attributable solely to the test is visible.

- Pre-existing edge damage visible
- Limited rebound due to weakened paper
- No new cracking observed

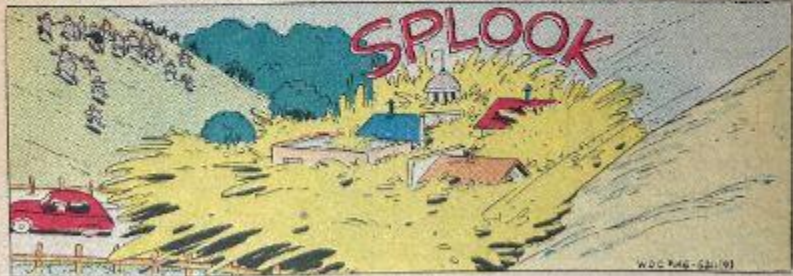
Overall Impression

Paper shows signs of age-related fragility, with damage present prior to brittleness testing.

CONSOLIDATED DEFECT LISTING

Walt Disney's Comics and Stories – Vol. 13 No. 2 (November 1952)

- Front-cover waviness in upper area with gloss loss
- Edge chipping and abrasion on front cover (~6–10 mm)
- Severe rust and paper damage at lower staple (~10–14 mm)
- Moderate oxidation at upper staple
- Localized spine weakness near lower staple
- Pre-existing page edge damage observed during brittleness test
- Moderate back cover toning



OH, BUTCH PROBABLY DOESN'T EVEN KNOW THAT TONIGHT IS THE NIGHT "THE EVIL SPIRITS FLY ABOUT..."



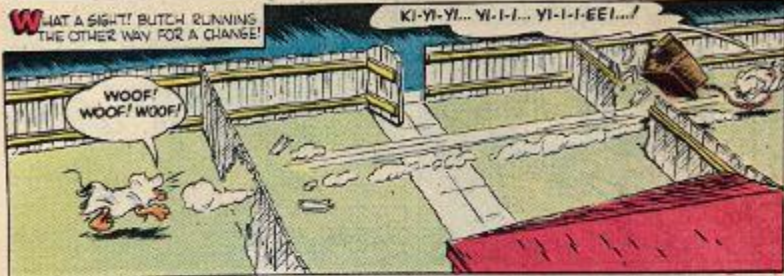
AT LEAST... IT'S PRETTY OBVIOUS HE ISN'T EXPECTING ANY OF THEM TO CALL ON HIM!



ESPECIALLY SUCH A LOW-FLYING MODEL!



WHAT A SIGHT! BUTCH RUNNING THE OTHER WAY FOR A CHANGE!



PLUTO HASN'T BEEN SO TICKLED SINCE THE TIME HE SAT ON A FEATHER!



UNFORTUNATELY... TWO "EX-GHOSTS" HAPPEN TO BE PASSING...



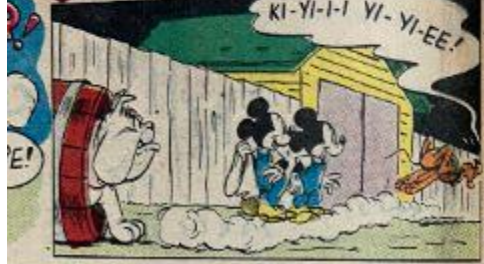


ROWING
FENCES!

ON SECOND THOUGHT... THE HILLS ARE
TOO FAR AWAY!



GHOSTS! MONSTERS! NOW DRAGONS! THIS IS AWFUL!



KI-YI-I-I YI-YI-EE!



WITH MICKEY!

OH SURE, MINNIE! THE
KIDS ARE HAVING A
GRAND TIME PLAYING
GHOSTS TONIGHT!



...AND Y'KNOW... I NEVER
REALIZED OL' PLUTO
WAS SUCH A
GOOD ACTOR!
HEH, HEH!

WALT DISNEY'S LITTLE HAWAIIANA



PLENTY WATER, PLENTY
FISH, PLENTY EVERYTHING!
EVEN GOT TRADE-UM
POST!

THAT
SOUND-UM
GOOD...

WE GOT-
ME L

WE LIKE-UM
NEW BRA



HOW SOON WE
GET THERE,
FATHER?

WE BE THERE BY
TIME TWO MOONS
HAVE SET,
SUNFLOWER!



TWO MOONS





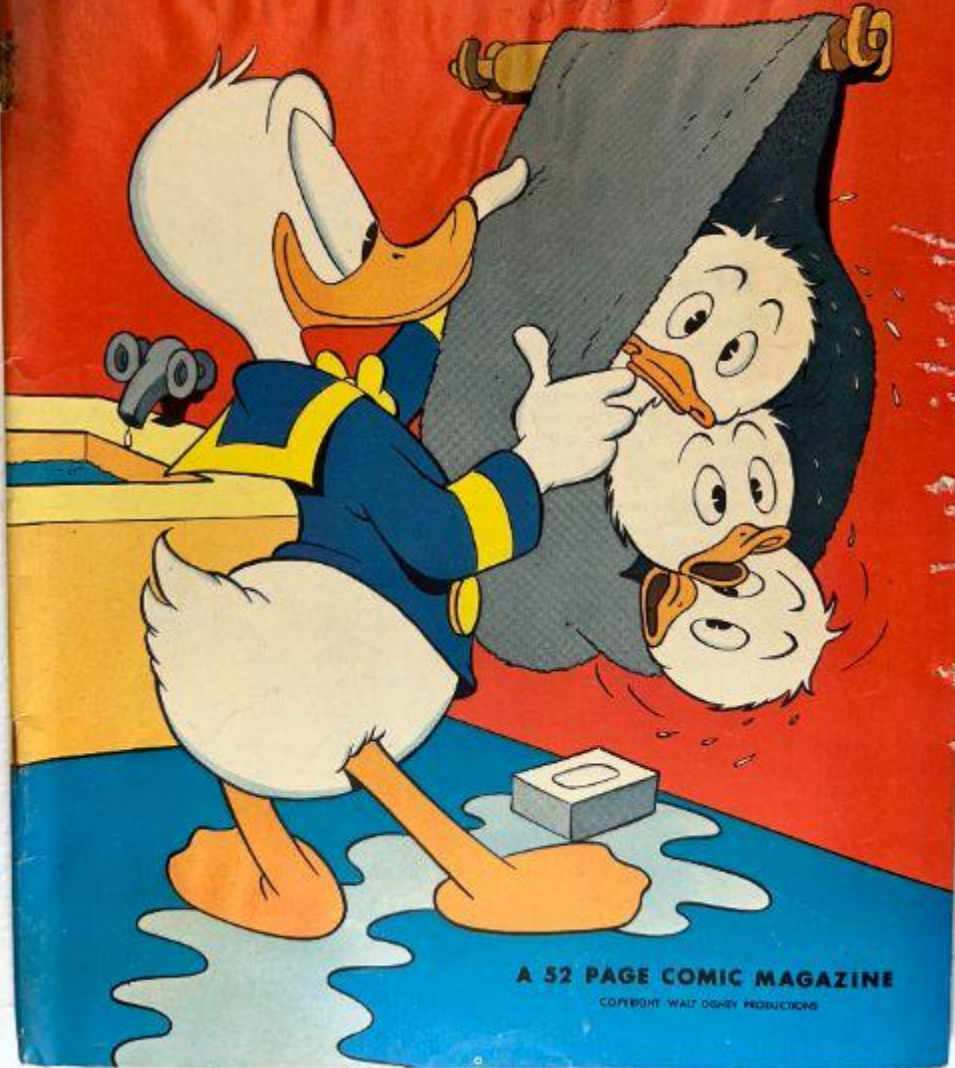




DELL
140
NOVEMBER

WALT DISNEY'S COMICS

AND
STORIES
10¢



A 52 PAGE COMIC MAGAZINE
COPYRIGHT WALT DISNEY PRODUCTIONS